

COUNTIS

Active energy meter and concentrator

E40 / E41 / E42 / E44

NEW



3-phase - Via CT up to 6000 A

⇒ Function

The **COUNTIS E4x** is an electrical energy meter designed for three-phase networks. It is used for connection via CT up to 6000 A.

⇒ Applications

The **COUNTIS E40** is a totalising meter allowing direct reading of the power consumed, using a pulse output. A partial meter with reset allows the energy to be metered over a specific period.

The **COUNTIS E41** also offers the option of taking two different invoicing tariffs into account. In this case, two partial meters are available.

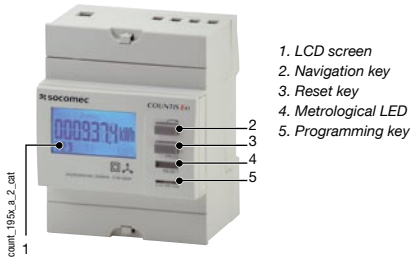
Besides the **COUNTIS E41**, the **COUNTIS E42** also offers MID certification.

Besides the **COUNTIS E42**, the **COUNTIS E44** also offers JBUS/MODBUS RTU communication via RS485.

⇒ Conformity to standards

- IEC 62053-23 class 2
- IEC 62053-21 class 1
- IEC 61557-12

➔ Front panel

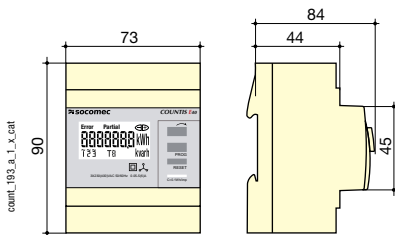


➔ Electrical Characteristics

Current measurement	
Type	TC/5A up to 6000 A
Input consumption	0.2 VA per phase
Overload	120 A / 0.5s
Sustained overload	6 A
Minimum measured current	10 mA
Voltage measurement	
Range of measurement	230 ... 400 V +/- 20%
Consumption on inrush (VA)	2 VA
Sustained overload	280 V
Energy accuracy	
Active (according to IEC 62053-21)	Class 1
Input supply	
Self-supply	Yes
Frequency	50 / 60 Hz

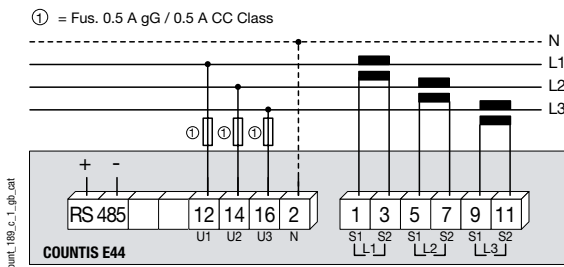
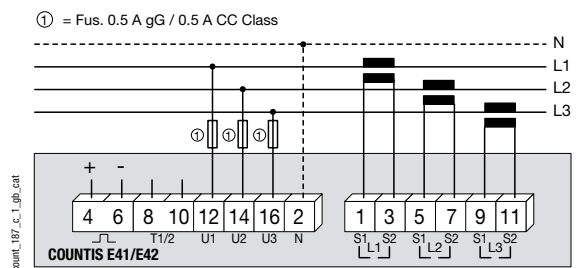
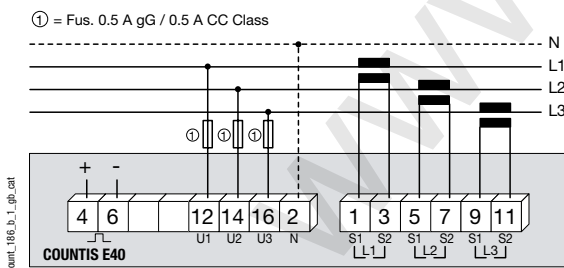
Output (pulsed)	
Number	1 (except E43)
Phototransistor type	IEC 62053-31 Class A
Fixed weight of impulses	100 Wh
Impulse duration	100 ms
Operating conditions	
Operating temperature	-10 to 55 °C
Storage temperature	-20 to 70 °C
Relative humidity	85 %
Communication	
Liaison	RS485
Type	2 ... 3 half duplex wires
Protocol	JBUS/MODBUS® in RTU mode
JBUS/MODBUS® speed	1400 ... 38400 bauds

➔ Case



Type	Modular
Number of modules	4
Dimensions W x H x D	73 x 90 x 84 mm
Case protection rating	IP20
Front protection rating	IP50
Display type	Backlit LCD display
Rigid cable connection section	1.5 to 10 mm ²
Flexible cable connection section	1 to 6 mm ²
Weight	230g

➔ Connection



➔ References

Type	COUNTIS E40 Reference	COUNTIS E41 Reference	COUNTIS E42 Reference	COUNTIS E44 Reference
Via CT	4850 3008			
Via CT - Dual tariff		4850 3009		
Via CT MID			4850 3015	
Via CT MID with JBUS MODBUS communication via RS485				4850 3014